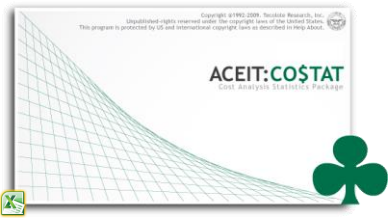


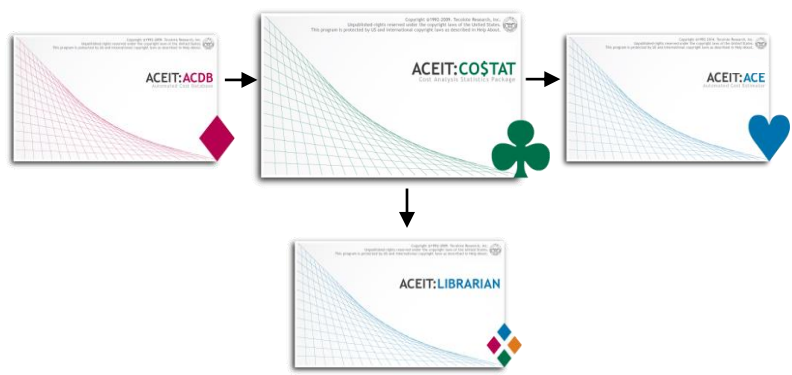


Estimates are Only as Good as their Methodologies



CO\$TAT is a powerful Excel-based statistical analysis application that has been specifically designed for the cost/price analyst. CO\$TAT allows analysts to rapidly develop quality cost estimating relationships. These relationships and supporting statistical documentation can easily be included in cost estimates. CO\$TAT contains most of the features available in commercially sold statistics programs.

- ◆ Univariate analysis
- ♠ Conduct regression analysis (Linear, Log-Linear, Non-Linear)
- ♣ Assess Learning Curves
- ♥ Develop spending profiles
- ◆ View statistical reports
- ♠ Generate Prediction Intervals
- ♣ Export methodologies to ACE libraries and estimates



Seamlessly integrates with several ACEIT applications

CO\$TAT Key Features:

- | | |
|---|--|
| <ul style="list-style-type: none"> ▪ Simple dataset creation in Excel ▪ Access to Statistical Analysis Methods <ul style="list-style-type: none"> – Distribution fit analysis – Pairwise correlation analysis – Univariate and multivariate analysis – Stepwise analysis – Multicollinearity analysis – Linear, log-linear, non-linear regression analysis – Least-squared analysis – Iterative method for non-linear regression – Identification of outliers, leverage points and data with undue influence – Use of dummy and weighting variables allowed – Cumulative average and unit theory learning curve analysis – Rate adjusted and broken learning – Spend profile analysis to determine beta curves – Ridge regression – MUPE analysis – Prediction interval calculations | <ul style="list-style-type: none"> ▪ Comprehensive Descriptive Statistics <ul style="list-style-type: none"> – Coefficient Statistics – Goodness of Fit – Analysis of Variance – Standard deviation – Mean, median, quartiles – Predictive Measures – Ridge statistics ▪ Integrated Documentation <ul style="list-style-type: none"> – Statistical reports – Pairwise correlation matrices – Interactive scatter plots, standardized residuals, actuals vs predicted, equation vs variable – Created as Excel worksheets ▪ Compare methodologies <ul style="list-style-type: none"> – Summary statistical report interface – Ability to set selection criteria ▪ Export to Libraries and ACE Estimates <ul style="list-style-type: none"> – Include dataset – Include statistical reports and graphics – Include prediction intervals and/or risk bounds |
|---|--|



Features

Availability

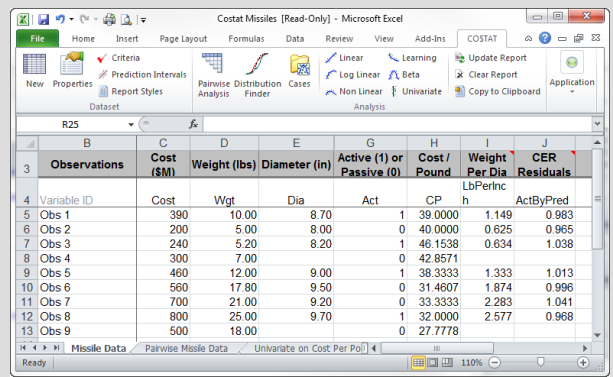
ACEIT is a U.S. Government funded product available through Tecolote Research, Inc.

Licensing

The ACEIT Government Program Office has tasked Tecolote Research to recoup a fair share of the ACEIT distribution, maintenance and support (DMS) costs from each U.S. Government ACEIT site. An annual DMS fee entitles U.S. Government organizations and their support contractors to ACEIT distribution and technical support. All other agencies and companies have to purchase an ACEIT software license.

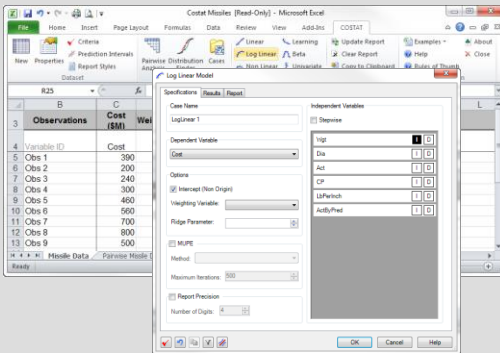
Excel Based

- Datasets easily created, updated, and managed in Excel workbooks
- CO\$TAT datasheets can easily be created from any source
- Allows for entire analysis and data to be self-contained in a simple file
- Data manipulation is simple and intuitive
- Users are in familiar application (Excel)



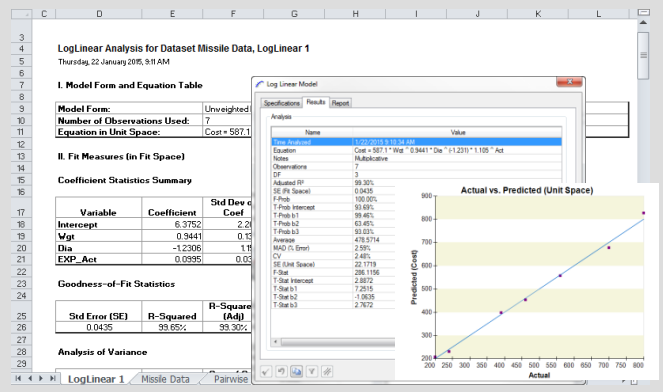
Intuitive Interface to Specify Analysis

- Access all functionality from the CO\$TAT analysis
- Model specification form (Dependent / Independent variables) is straight-forward
- Develop methodologies specific to system types/ technologies based on available historical data for use as primary estimator or a cross-check
- Prediction intervals and results can be quickly Displayed and exported



Comprehensive Statistics

- Statistical results can be viewed quickly and a detailed report can be created in an Excel workbook
- Graphical charts are generated
- Entire detailed statistics report can be exported into ACE CER libraries or in ACE estimate documentation



ACEIT Development
Tecolote Research, Inc.
Software Products Division
5266 Hollister Ave., Suite 301
Santa Barbara, CA 93111-2089
phone (805) 964-6963

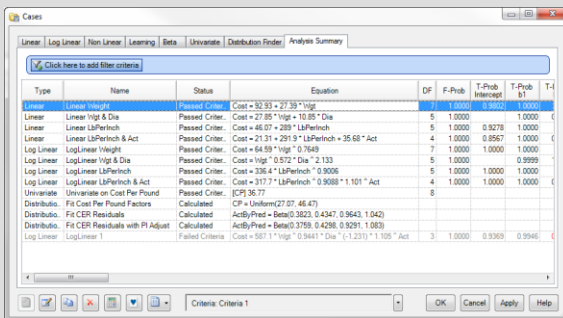
ACEIT Sales
aceit_sales@tecolote.com
phone (281) 333-0240
fax (281) 333-0232

ACEIT Support
aceit_support@tecolote.com
phone (805) 964-6963

Website
www.aceit.com

Easily Compare Methodologies

- Compare and view all solutions from a simple interface
- Assess which model forms meet statistics criteria
- Export desired methods for use in ACE



additional information can be found at: www.aceit.com