



**ACEIT** is a suite of applications built by cost analysts for cost analysis that enables customers to build concise, structured, and robust cost estimates; develop cost estimating relationships (CERs); conduct “what-if” analyses; generate management level reports; and prepare extensive basis of estimate documentation.

The only cost estimating software solution built specifically for U.S. Government cost analysts. Government funded and configuration controlled since 1988.

Key ACEIT Features:

- ♠ Cost Estimate Builder, “what-if” analyses, and BOE documentation
- ♦ Cost and Schedule uncertainty analysis
- ♣ Statistical analysis
- ♥ Automated reporting, charts, and presentation development
- ♠ Database development, search, and retrieval
- ♦ Methodology and Inflation Libraries

**Automated Cost Estimator (ACE)** is the estimating portion and heart of the ACEIT application suite; it is a model-building tool. Part spreadsheet, part database, it incorporates enough structure to eliminate most of the automation tasks you would have to perform if you used a spreadsheet, yet it’s flexible enough to estimate any type of program/effort. ACE features include: data normalization, learning, time phasing, documentation, what-if analysis, charting, error trapping, and uncertainty analysis.

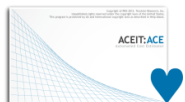
**Cost and Statistical Analysis Tool (CO\$TAT)** is a statistics package that has been designed for the cost/price analyst containing key features found in most major statistical applications. With CO\$TAT you can conduct pairwise correlation, univariate, multivariate, linear, log-linear, non-linear, beta curve, statistical sampling, and learning curve analyses. CO\$TAT includes Distribution Finder which allows you to find the distribution shape that most closely matches your data.

**Program Office Support Tool (POST)** allows for quick reporting, charting and what-if drills in Excel. Through POST, you can access an ACE session, view results and inputs for ACE cases, develop alternative scenarios, create graphical charts or tabular reports, and export desired reports/charts to PowerPoint and/or Word. Presentations can automatically be updated based on new results. POST Doc performs many of the same functions as POST but within Word.

**Automated Cost Database (ACDB)** consists of two applications: the Database Development Kit (DDK) and the Report Wizard. The powerful DDK lets you create a tailored database. Once populated, the Report Wizard lets you search and retrieve cost, schedule, technical, and programmatic data. The Report Wizard will output ACDB data to either CO\$TAT or Excel.

**Joint Analysis of Cost and Schedule (JACS)** is an add-in for Microsoft Project and is compatible with Primavera P6. JACS is designed to quickly create an integrated cost and schedule uncertainty analysis. It enables the cost-loading of schedule tasks and risk events, allowing the analyst to assign probability distributions and create a holistic view of the resultant risk analysis.

**ACEIT Librarian** is a powerful tool enabling any office to automatically build and maintain methodology libraries containing analogies, factors, equations, rules, and/or source references. It also lets you create unique inflation indices for your program, project, or organization that can then be accessed by ACEIT applications or from within Excel.



# Features

## Availability

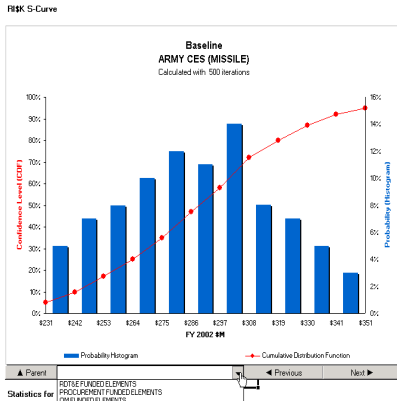
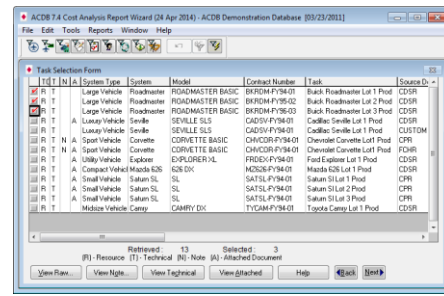
ACEIT is a U.S. Government funded product available through Tecolote Research, Inc.

## Licensing

The ACEIT Government Program Office has tasked Tecolote Research to recoup a fair share of the ACEIT distribution, maintenance and support (DMS) costs from each U.S. Government ACEIT site. An annual DMS fee entitles U.S. Government organizations and their support contractors to ACEIT distribution and technical support. All other agencies and companies have to sign and purchase an ACEIT software license.

## Build Knowledge Libraries and Databases

The interactivity of the ACEIT tools provides an automated capability to create, populate, and update databases and knowledge libraries. You can do this by using ACDB, COSTAT, and Librarian. ACDB lets you structure your own database and import data electronically, automating the database creation and update process. You can then search the database to develop a set of relevant data and export the data to COSTAT or Excel. From COSTAT, you can conduct regression and learning curve analyses to test hypotheses. You can export any relationships you develop directly into ACE for immediate use, or into custom libraries using the Librarian.

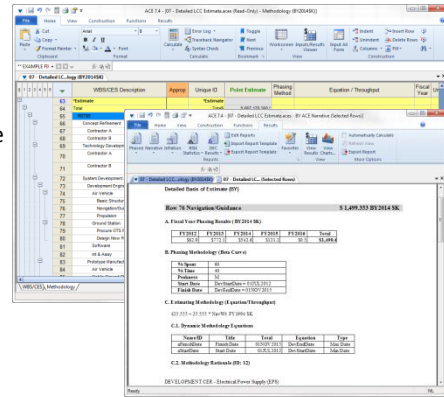


## Conduct Uncertainty Analysis

ACEIT integrates uncertainty analysis totally within the cost model. Within ACE, you can specify uncertainty distributions for any item, e.g., cost estimating equations, labor rates, cost drivers, etc. ACE uses the session's underlying equation logic and the specified distributions to calculate the overall risk distribution for the cost estimate. You can choose from multiple probability distributions. If you use COSTAT, you can determine the appropriate prediction intervals, and use them in your ACE session to specify the bounds on uncertainty distributions. This ties the estimating uncertainty associated with your chosen methodologies directly to the data from which they were created.

## Generate Complete Estimate Documentation

ACE provides simple menu commands and uses MS Word as an interface to quickly document important information about the estimate and automatically generate a fully integrated basis of estimate narrative report for any item in the ACE session. You can specify a rationale for the estimating methodology, describe how the estimate was phased, provide a detailed description of the item, document any cost adjustments, explain the learning assumptions, and provide a rationale for the risk parameters. The ACE narrative can be customized to show all the information needed to trace, replicate, and understand the estimate, thereby simplifying the estimate review process.

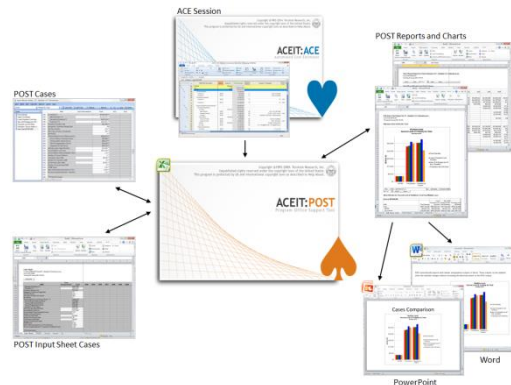


**ACEIT Development**  
Tecolote Research, Inc.  
Software Products Division  
5266 Hollister Ave., Suite 301  
Santa Barbara, CA 93111-2089  
phone (805) 964-6963

**ACEIT Sales**  
aceit\_sales@tecolote.com  
phone (281) 333-0240  
fax (281) 333-0232

**ACEIT Support**  
aceit\_support@tecolote.com  
phone (805) 964-6963

**Website**  
www.aceit.com



## Create Reports, Charts and Run What-Ifs

POST allows ACE-built cost models to be run in Excel, helping Program Office staff and cost analysts to easily and quickly perform and present the results of ACE estimates and what-if scenarios. With POST, you can compare the inputs and results of cases, rapidly create charts or tabular reports, and export desired reports/charts to PowerPoint and/or Word. The innovative architecture allows for the rapid creation of new reports and the ability to automatically update existing reports, presentations, and documents.

additional information can be found at: [www.aceit.com](http://www.aceit.com)