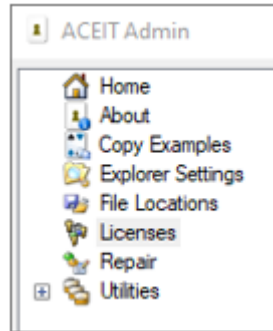




Tip of the Month
Updating ACEIT License Strings

If your license has already expired, ACE prompts you to enter an updated license string upon opening the application. Otherwise, enter the new string through the Licenses page of the ACEIT Admin.

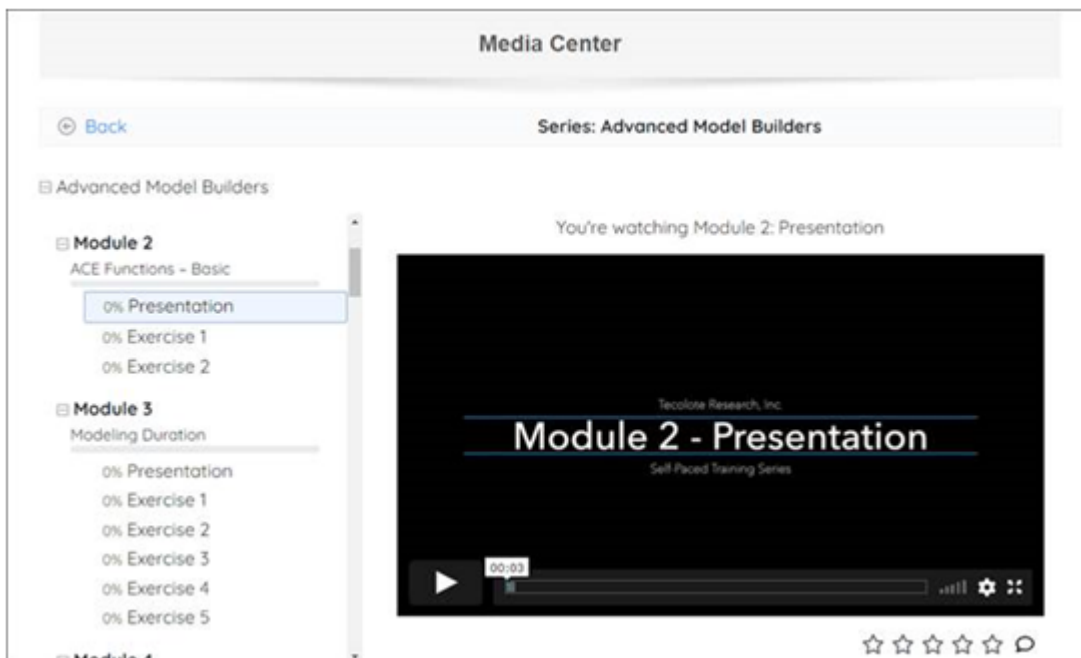
Contact [ACEIT Support](#) if updating license strings using the Registry Editor.



Self-Paced Training Opportunities
New Advanced Training Instructional Videos!

Students enrolled in the Self-Paced **ACEIT for Advanced Model Builders** course now have access to instructor-led videos to offer an enhanced educational experience! Instructional videos were initially made available for students enrolled in the Self-Paced **ACEIT for Model Builders**, but has since expanded to include both courses.

These instructional videos follow the training course modules and combine the instructor guidance of In-Person Training to the convenient self-paced delivery mechanism. Eligible students have access to the companion videos through the [ACEIT.com Media Center](#) for the duration of their self-paced course.



The ACEIT for Model Builders and ACEIT for Advanced Model Builders courses now include: a hard copy training manual, electronic student files, instructional videos, and instructor tutoring hours. Each instructional video is narrated by a certified ACEIT instructor.

Call or email our [ACEIT Training Coordinator](#) (805) 964-6963 x2571 and let her register you for your enhanced Self-Paced Training courses.

Online Help Article **JSON Export for ACE Case Results**

One of the highlighted features of [ACEIT 8.0.132.11 SP2-003](#) is the ability to export ACE case results as JSON files. These files are commonly used to store data because of their easily read and integrated format.

With the JSON export feature, ACE users can use specialized data analysis and visualization tools to further support their estimates. Read the article to learn how to export ACE results as JSON files and how to ingest them in 3rd party applications.



To view more, log into [ACEIT.com](#) and visit [User Resources > Online Help](#). You need to have an active ACEIT DMS to access this section. You're also welcome to email ACEIT_Support@Tecolote.com with any comments, feedback, or ideas you have for future articles!

Open Training Schedule

For students who prefer an in-person training experience, we continue to offer our open registration classes in Washington, DC. These classes are conducted with COVID-19 safety protocols, for the safety of our instructors and students.

Class Name	Date	Location
ACEIT for Advanced Model Builders (v8.0)	02/01/2022	Washington, DC
ACEIT for Model Builders (v8.0)	02/15/2022	Washington, DC
ACEIT for Reviewers (v8.0)	03/15/2022	Washington, DC
ACEIT for Model Builders (v8.0)	04/19/2022	Washington, DC
ACEIT for CER Developers: CO\$TAT (v8.0)	04/26/2022	Washington, DC

Call or email our [ACEIT Training Coordinator](#) (805) 964-6963 x2571 and let her assist with your training needs.

Follow Us on



ACEIT Support

(805) 964-6963 ext. 2599
aceit_support@tecolote.com

ACEIT Sales

(805) 964-6963 ext. 2570
aceit_sales@tecolote.com

ACEIT Training

(805) 964-6963 ext. 2571
aceit_train@tecolote.com

[ACEIT Website](#) | [Privacy](#) | [Legal](#) | [Contact Us](#)

You are receiving this email because you are associated with an active ACEIT site and have registered on the ACEIT website. To be removed from this e-mail, [update your e-mail preference\(s\)](#) on the My Account section of our website.



TECOLOTE
RESEARCH © copyright 2004-2021